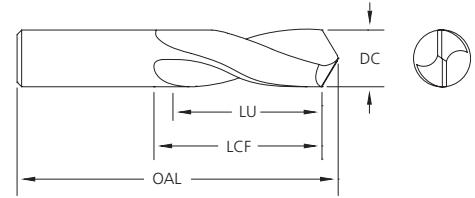
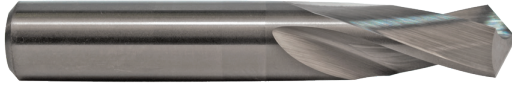
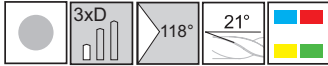


Twister® GP 3xD - Series 206



- Designed to allow high feed rates with good chip flow.
- Four facet drill point minimizes drill wander and assures accurately sized holes.
- Shorter length reduces deflection and vibration, increases drill accuracy and improves tool life.
- Useable length (LU) = LCF - (1.5 x DC).

Twister® GP Drills Series 206

| Uncoated | | DC | | | OAL | LCF |
|----------|-------|------|------|---------|-------|-----|
| Tool No. | EDP | Inch | Wire | Decimal | | |
| 20604000 | 26004 | | 60 | .0400 | 1-1/2 | 3/8 |
| 20604100 | 26007 | | 59 | .0410 | 1-1/2 | 3/8 |
| 20604200 | 26013 | | 58 | .0420 | 1-1/2 | 3/8 |
| 20604300 | 26016 | | 57 | .0430 | 1-1/2 | 3/8 |
| 20604650 | 26025 | | 56 | .0465 | 1-1/2 | 3/8 |
| 20604690 | 26028 | 3/64 | | .0469 | 1-1/2 | 3/8 |
| 20605200 | 26040 | | 55 | .0520 | 1-1/2 | 3/8 |
| 20605500 | 26046 | | 54 | .0550 | 1-1/2 | 3/8 |
| 20605950 | 26058 | | 53 | .0595 | 1-1/2 | 3/8 |
| 20606250 | 26061 | 1/16 | | .0625 | 1-1/2 | 3/8 |
| 20606350 | 26067 | | 52 | .0635 | 1-1/2 | 3/8 |
| 20606700 | 26073 | | 51 | .0670 | 1-1/2 | 3/8 |
| 20607000 | 26076 | | 50 | .0700 | 1-1/2 | 3/8 |
| 20607300 | 26082 | | 49 | .0730 | 1-1/2 | 3/8 |
| 20607600 | 26088 | | 48 | .0760 | 1-1/2 | 1/2 |
| 20607810 | 26091 | 5/64 | | .0781 | 1-1/2 | 1/2 |
| 20607850 | 26094 | | 47 | .0785 | 1-1/2 | 1/2 |
| 20608100 | 26100 | | 46 | .0810 | 1-1/2 | 1/2 |
| 20608200 | 26103 | | 45 | .0820 | 1-1/2 | 1/2 |
| 20608600 | 26109 | | 44 | .0860 | 2 | 1/2 |
| 20608900 | 26115 | | 43 | .0890 | 2 | 1/2 |
| 20609350 | 26121 | | 42 | .0935 | 2 | 1/2 |
| 20609380 | 26124 | 3/32 | | .0938 | 2 | 1/2 |
| 20609600 | 26130 | | 41 | .0960 | 2 | 1/2 |
| 20609800 | 26133 | | 40 | .0980 | 2 | 5/8 |
| 20609950 | 26139 | | 39 | .0995 | 2 | 5/8 |
| 20610150 | 26142 | | 38 | .1015 | 2 | 5/8 |
| 20610400 | 26148 | | 37 | .1040 | 2 | 5/8 |
| 20610650 | 26154 | | 36 | .1065 | 2 | 5/8 |
| 20610940 | 26157 | 7/64 | | .1094 | 2 | 5/8 |
| 20611000 | 26160 | | 35 | .1100 | 2 | 5/8 |
| 20611100 | 26166 | | 34 | .1110 | 2 | 5/8 |
| 20611300 | 26169 | | 33 | .1130 | 2 | 5/8 |
| 20611600 | 26175 | | 32 | .1160 | 2 | 5/8 |

| Uncoated | | DC | | | OAL | LCF |
|----------|-------|-------|------|---------|--------|-----|
| Tool No. | EDP | Inch | Wire | Decimal | | |
| 20612000 | 26181 | | 31 | .1200 | 2 | 5/8 |
| 20612500 | 26187 | 1/8 | | .1250 | 2 | 5/8 |
| 20612850 | 26193 | | 30 | .1285 | 2 | 5/8 |
| 20613600 | 26202 | | 29 | .1360 | 2 | 5/8 |
| 20614050 | 26208 | | 28 | .1405 | 2 | 5/8 |
| 20614060 | 26211 | 9/64 | | .1406 | 2 | 5/8 |
| 20614400 | 26217 | | 27 | .1440 | 2 | 5/8 |
| 20614700 | 26223 | | 26 | .1470 | 2 | 5/8 |
| 20614950 | 26226 | | 25 | .1495 | 2 | 5/8 |
| 20615200 | 26232 | | 24 | .1520 | 2 | 5/8 |
| 20615400 | 26238 | | 23 | .1540 | 2 | 5/8 |
| 20615620 | 26241 | 5/32 | | .1562 | 2 | 3/4 |
| 20615700 | 26244 | | 22 | .1570 | 2 | 3/4 |
| 20615900 | 26250 | | 21 | .1590 | 2 | 3/4 |
| 20616100 | 26253 | | 20 | .1610 | 2 | 3/4 |
| 20616600 | 26262 | | 19 | .1660 | 2-1/8 | 3/4 |
| 20616950 | 26268 | | 18 | .1695 | 2-1/8 | 3/4 |
| 20617190 | 26271 | 11/64 | | .1719 | 2-1/8 | 3/4 |
| 20617300 | 26274 | | 17 | .1730 | 2-1/8 | 3/4 |
| 20617700 | 26280 | | 16 | .1770 | 2-1/8 | 3/4 |
| 20618000 | 26286 | | 15 | .1800 | 2-3/16 | 3/4 |
| 20618200 | 26292 | | 14 | .1820 | 2-3/16 | 3/4 |
| 20618500 | 26295 | | 13 | .1850 | 2-3/16 | 3/4 |
| 20618750 | 26298 | 3/16 | | .1875 | 2-3/16 | 3/4 |
| 20618900 | 26304 | | 12 | .1890 | 2-3/16 | 3/4 |

See Series 226 on page 418 for mm size Stub Drills.

| Inch | |
|---------------|-----------------|
| DC | Tolerance |
| .0400 - .7812 | + .0000/- .0005 |



| Uncoated | | DC | | | OAL | LCF |
|----------|-------|-------|------|---------|--------|-------|
| Tool No. | EDP | Inch | Wire | Decimal | | |
| 20619100 | 26307 | | 11 | .1910 | 2-3/16 | 3/4 |
| 20619350 | 26313 | | 10 | .1935 | 2-3/16 | 3/4 |
| 20619600 | 26316 | | 9 | .1960 | 2-1/4 | 3/4 |
| 20619900 | 26322 | | 8 | .1990 | 2-1/4 | 3/4 |
| 20620100 | 26328 | | 7 | .2010 | 2-1/4 | 3/4 |
| 20620310 | 26331 | 13/64 | | .2031 | 2-1/4 | 3/4 |
| 20620400 | 26334 | | 6 | .2040 | 2-1/4 | 3/4 |
| 20620550 | 26340 | | 5 | .2055 | 2-1/4 | 3/4 |
| 20620900 | 26346 | | 4 | .2090 | 2-1/4 | 3/4 |
| 20621300 | 26352 | | 3 | .2130 | 2-1/2 | 1 |
| 20621870 | 26358 | 7/32 | | .2187 | 2-1/2 | 1 |
| 20622100 | 26364 | | 2 | .2210 | 2-1/2 | 1 |
| 20622800 | 26370 | | 1 | .2280 | 2-1/2 | 1 |
| 20623400 | 26379 | | A | .2340 | 2-1/2 | 1 |
| 20623440 | 26382 | 15/64 | | .2344 | 2-1/2 | 1 |
| 20623800 | 26388 | | B | .2380 | 2-1/2 | 1 |
| 20624200 | 26394 | | C | .2420 | 2-1/2 | 1 |
| 20624600 | 26400 | | D | .2460 | 2-1/2 | 1 |
| 20625000 | 26406 | 1/4 | E | .2500 | 2-1/2 | 1 |
| 20625700 | 26415 | | F | .2570 | 2-1/2 | 1 |
| 20626100 | 26421 | | G | .2610 | 2-1/2 | 1 |
| 20626560 | 26427 | 17/64 | | .2656 | 2-1/2 | 1 |
| 20626600 | 26430 | | H | .2660 | 2-1/2 | 1 |
| 20627200 | 26439 | | I | .2720 | 2-1/2 | 1 |
| 20627700 | 26445 | | J | .2770 | 2-1/2 | 1 |
| 20628100 | 26451 | | K | .2810 | 2-1/2 | 1 |
| 20628120 | 26454 | 9/32 | | .2812 | 2-1/2 | 1 |
| 20629000 | 26463 | | L | .2900 | 2-1/2 | 1 |
| 20629500 | 26469 | | M | .2950 | 2-1/2 | 1-1/4 |
| 20629690 | 26475 | 19/64 | | .2969 | 2-1/2 | 1-1/4 |
| 20630200 | 26481 | | N | .3020 | 2-1/2 | 1-1/4 |
| 20631250 | 26493 | 5/16 | | .3125 | 2-1/2 | 1-1/4 |
| 20631600 | 26499 | | O | .3160 | 2-1/2 | 1-1/4 |
| 20632300 | 26508 | | P | .3230 | 2-1/2 | 1-1/4 |
| 20632810 | 26514 | 21/64 | | .3281 | 2-1/2 | 1-1/4 |
| 20633200 | 26520 | | Q | .3320 | 2-1/2 | 1-1/4 |
| 20633900 | 26529 | | R | .3390 | 2-1/2 | 1-1/4 |
| 20634380 | 26535 | 11/32 | | .3438 | 2-1/2 | 1-1/4 |
| 20634800 | 26541 | | S | .3480 | 2-1/2 | 1-1/4 |
| 20635800 | 26550 | | T | .3580 | 2-1/2 | 1-1/4 |
| 20635940 | 26556 | 23/64 | | .3594 | 2-1/2 | 1-1/4 |
| 20636800 | 26565 | | U | .3680 | 2-1/2 | 1-1/4 |
| 20637500 | 26574 | 3/8 | | .3750 | 2-1/2 | 1-1/4 |

| Uncoated | | DC | | | OAL | LCF |
|----------|-------|-------|------|---------|-------|-------|
| Tool No. | EDP | Inch | Wire | Decimal | | |
| 20637700 | 26577 | | V | .3770 | 2-1/2 | 1-1/4 |
| 20638600 | 26589 | | W | .3860 | 2-3/4 | 1-1/4 |
| 20639060 | 26595 | 25/64 | | .3906 | 2-3/4 | 1-1/4 |
| 20639700 | 26601 | | X | .3970 | 2-3/4 | 1-1/4 |
| 20640400 | 26610 | | Y | .4040 | 2-3/4 | 1-1/4 |
| 20640620 | 26616 | 13/32 | | .4062 | 2-3/4 | 1-1/4 |
| 20641300 | 26622 | | Z | .4130 | 2-3/4 | 1-1/4 |
| 20642190 | 26634 | 27/64 | | .4219 | 2-3/4 | 1-1/4 |
| 20643750 | 26649 | 7/16 | | .4375 | 2-3/4 | 1-1/4 |
| 20645310 | 26664 | 29/64 | | .4531 | 3 | 1-1/4 |
| 20646880 | 26679 | 15/32 | | .4688 | 3 | 1-1/4 |
| 20648440 | 26685 | 31/64 | | .4844 | 3 | 1-1/4 |
| 20650000 | 26691 | 1/2 | | .5000 | 3 | 1-1/4 |
| 20651560 | 26697 | 33/64 | | .5156 | 3-1/2 | 1-3/8 |
| 20653120 | 26700 | 17/32 | | .5312 | 3-1/2 | 1-3/8 |
| 20654690 | 26706 | 35/64 | | .5469 | 3-1/2 | 1-1/2 |
| 20656250 | 26712 | 9/16 | | .5625 | 3-1/2 | 1-1/2 |
| 20657810 | 26718 | 37/64 | | .5781 | 3-1/2 | 1-5/8 |
| 20659380 | 26724 | 19/32 | | .5938 | 3-1/2 | 1-5/8 |
| 20660940 | 26727 | 39/64 | | .6094 | 3-1/2 | 1-3/4 |
| 20662500 | 26733 | 5/8 | | .6250 | 3-1/2 | 1-3/4 |
| 20664060 | 26739 | 41/64 | | .6406 | 4 | 1-7/8 |
| 20665620 | 26745 | 21/32 | | .6562 | 4 | 1-7/8 |
| 20667190 | 26751 | 43/64 | | .6719 | 4 | 1-7/8 |
| 20668750 | 26754 | 11/16 | | .6875 | 4 | 1-7/8 |
| 20670310 | 26760 | 45/64 | | .7031 | 4 | 2 |
| 20671880 | 26766 | 23/32 | | .7188 | 4 | 2-1/8 |
| 20673440 | 26772 | 47/64 | | .7344 | 4 | 2-1/8 |
| 20675000 | 26778 | 3/4 | | .7500 | 4 | 2-1/8 |
| 20676560 | 26781 | 49/64 | | .7656 | 4 | 2-1/4 |
| 20678120 | 26784 | 25/32 | | .7812 | 4 | 2-1/4 |

See Series 226 on page 418 for mm size Stub Drills.



Page 452

Twister® GP Drills
Series 206